



fiftyplus  
advocate

Our  
Pets

and the  
positive impact  
they have on  
our lives

page 4

Baypath Humane Society of Hopkinton, Inc. volunteer Marie McDonough, with one of the shelter's guests.

PHOTO/BETH ORAM, BETH ORAM PHOTOGRAPHY





Goddard / Homestead

A Caring Community for Elders

A Legacy of Providing Exceptional Care for Seniors Since 1874  
For More Information Contact Tracey King at 508-868-0967  
[www.goddardhomestead.org](http://www.goddardhomestead.org)





# AARP's 2017 budget priorities

BY MIKE FESTA, STATE DIRECTOR  
AARP MASSACHUSETTS

Massachusetts elected officials prepared the Fiscal Year 2018 (FY18) commonwealth budget proposal, a \$40.5 billion spending plan which funds key priorities.

The Massachusetts fiscal year begins on July 1. Governor Charlie Baker made his budget recommendations in January; the House made its budget recommendations in April; and the Senate released its recommendations in May. The budget conference committee will release their recommendations in June.

AARP believes the com-

monwealth must now invest in vital programs, services and budgets to protect our aging population. We know that with each budget, difficult decisions must be made. But, we also know that the most vulnerable among us must be protected.

The aging population of Massachusetts will continue to grow along with its unique issues related to financial, health, caregiving and long-term care needs. Both planning and action by the commonwealth are required to make our society work well on behalf of all residents.

There are more than one million commonwealth residents age 65 and over, and according to the recent Massachusetts Commission on Elder Economic Security report, 6 in 10 single elders do not have the income to meet their basic needs.

According to estimates from the University of Massachusetts

Donahue Institute, the number of adults 60 and over in Massachusetts will soon eclipse the under-20 age cohort for the first time in recorded history. By the next census in 2020, the 60-plus group will comprise 24 percent of the population. AARP Massachusetts believes it is incumbent upon policy makers to recognize the changing demographics.

AARP Massachusetts budget priorities include programs and services that recognize and support the critical role of family caregivers; help people stay in their own home and community; strengthen the financial security of Massachusetts residents; and encourage age-friendly communities. Specifically, we recommend the following:

Full and adequate funding to provide home- and community-based care that enables older and disabled persons to remain healthy and independent, in-

cluding raising the income eligibility limits for basic home care services and some cost-sharing requirements;

Development of a long-term care continuum that includes high quality, affordable skilled nursing facilities, assisted living facilities, adult day health services, senior housing and home and community based services, to meet the needs of our aging population;

Full and adequate funding to maintain the 10-day nursing home leave of absence and the nursing home residents' personal needs allowance;

Full and adequate funding of protective services, including adult guardianship, the FAST teams, and the Money Management Program;

Support for family caregiver assistance, including education and training, counseling, legal

AARP page 3



Mike Festa



WHEELCHAIR ACCESSIBLE BATHROOM



NO-STEP ENTRY



ADJUSTABLE SHOWERHEAD

AARP can help you make where you live a lifelong home that's comfortable, safe and a great fit. By 2030, one in five adults in the U.S. will be 65-plus, and the vast majority of them will want to remain in their homes and communities. That's why AARP is helping towns and cities nationwide become great, livable places for people of all ages.

Learn more at [aarp.org/livable](http://aarp.org/livable).

**AARP**® Real Possibilities  
Massachusetts



## Is Your Home "HomeFit"?

AARP can help you make where you live a lifelong home that's comfortable, safe and a great fit.



## pursue your passion

# Framingham man creates art with a chainsaw

By JANICE BERTÉ  
CONTRIBUTING WRITER

FRAMINGHAM - Standing in a small 10-by-10 mesh tent at the Framingham Pinefield Shopping Center, one can find Sylvio Chauvin carefully carving pinewood into owls, bears, dogs, eagles and benches. Wearing protective chaps and covered in sawdust on a sunny Saturday afternoon, Chauvin is surrounded by several onlookers shouting things like, "Hey man, you are so talented!" or "I love natural looking things at my house. Can you make me a bench?" Chauvin smiles and slowly puts his Stihl chainsaw down to answer all of their questions.

Once Monday rolls around, Chauvin works in construction, but spends his evenings and weekends in solitude mastering the art of carving wood. His love for cutting pine logs into works of art started six years ago when he saw a man in New Hampshire sculpting lifelike masterpieces.

"I find this work to be very relaxing," he said.

The most common requests are for replicas of peoples' dogs. Since this is a part-time job for Chauvin, the labor time can rack up from three to 24 hours depending on the intricacy and



Left: Sylvio Chauvin with one of his creations

Below: A Bruins bear carved by Chauvin



PHOTOS: JANICE BERTÉ

detail of the piece.

"My hardest piece to cut is the eagle," he said, "and the easiest would be the owl."

These artistic creations of pinewood can range in price, and can weigh anywhere from 10 to 300 pounds. As Chauvin finishes carving his objects, he brushes and protects his pieces with a three-part combination of linseed oil, spar varnish and

mineral spirit which is similar to paint thinner. He usually recommends to his buyers that once a year they layer a coat of this protective sealant on his creation.

To challenge his talent for carving wood, Chauvin attends the Chainsaw Carvers' Rendezvous in Ridgeway, Pa. This eight-day event has carvers from around the world. They are presented with an eight-foot log which allows them to showcase what they can master with that timber. Once the objects are completed, several roads are closed off, and all of the sculptures are displayed on specific streets. The rendezvous includes seminars and other fun activities for the attendees and participants.

For more information on Chauvin's work, contact him at [sylviochauvin@gmail.com](mailto:sylviochauvin@gmail.com).

## AARP's 2017 budget priorities

AARP  
Continued from page 2

consultations, respite care, adult day services, and programs that help individuals pay relatives and friends who provide care;

Funding to create a "common application option" for MassHealth applicants to get SNAP (Supplemental Nutrition Assistance Program), and sufficient case worker funding to support increased SNAP caseload; and

Full and adequate funding

for the Councils on Aging and Senior Centers.

Stay up-to-date on the latest caregiving and advocacy news with AARP Massachusetts. Visit [www.aarp.org/ma](http://www.aarp.org/ma) or call toll-free at 866-448-3621. Archives of articles from previous issues can be read at [www.fiftyplusadvocate.com](http://www.fiftyplusadvocate.com).

**Mike Festa is the state director for AARP Massachusetts. Archives of articles from previous issues can be read at [www.fiftyplusadvocate.com](http://www.fiftyplusadvocate.com).**

## Honoring Our Heroes

*Veterans receive affordable health care at their local VA*

**20**

**Did you know VA has 20 clinics and hospitals in Massachusetts?**

*At these convenient locations VA offers the most comprehensive health care options that a Veteran could ask for.*

**\$0**

**Did you know VA has no fees, premiums, or deductibles?**

*Enroll today and take advantage of the benefits you earned such as prescription benefits, hearing aids, glasses, and much more.*



U.S. Department of Veterans Affairs  
Veterans Health Administration

**1-844-VA-CARES (822-2737)**  
**[www.newengland.va.gov/50plus](http://www.newengland.va.gov/50plus)**





# Miniature horse 'Rosie' brings joy to all ages

By BONNIE ADAMS  
MANAGING EDITOR

When Barbara Shaer would go to visit her mother, Ida Baker, who was living in a nursing home, another regular visitor there was a therapy dog. Since Shaer had recently retired from a career in health care, her brother Stephen Shear suggested that she consider doing pet therapy as well – but with a twist.

"He knew I loved horses so he suggested I do it with them," she said.

Intrigued, Shaer, who lives in Mansfield, started researching the idea, specifically with a miniature horse.

"It seemed like such a beautiful thing," she said. "I knew it was something I wanted to do."

Her search led her to a beautiful little class A miniature silver dapple horse, Rosie, who at the time was living in Connecticut with her previous owner. Af-



Barbara Shaer and "Rosie" with a young fan.

ter buying Rosie, Shaer started working with the organization Pet Partners in order to train and then eventually be certified with Rosie as a therapy team. Assisting her along the way as well was a young friend, Mason Rober, 14.

After becoming certified in July 2016, Shaer tapped into her network to spread the word that she and Rosie were available for visits. And in a year's time, they have gone to a number of facilities throughout southeastern Mass. and Rhode Island, such as libraries, assisted living and dementia care facilities and daycare for those with disabilities.

"It's been busy but extremely exciting," she said. "Everyone loves the idea."

At every visit, Rosie enthalls all she meets, Shaer said.

"She has a warm, cuddly personality," she noted. "People just love being in her presence and she loves being with them. She walks

PHOTO COURTESY OF BARBARA SHAER

Rosie page 10



AROUND  
the  
CLOCK  
HOME HEALTHCARE



*Quality, compassionate care from OUR family to YOURS!*

Skilled Nursing Care  
Case Management  
Personal Care  
Homemaker  
Companion  
Live-In Care  
Hourly Care

Local family-owned and operated  
home care agency with multiple nurses on  
staff with more than 75 years combined  
experience in healthcare.

Call us **NOW** for a  
Complimentary Assessment  
by a nurse on staff

855-839-HOME  
508-281-6070

www.atclockhomehealthcare.com  
atclockoffice@atclockhomehealthcare.com



Serving Metrowest, Worcester County, and surrounding towns



# july

## Inside this issue

Pets and People  
Foundation  
offers  
pet-assisted  
therapy  
  
**page 6**



An exotic  
kind of love

**page 17**

## Departments

Caregiving Tips .....18      Viewpoint ..... 20  
Money Matters .....19      Housing Options .....21

## Index of Services

### Adult Day Care

Adult Day Club at Dodge Park...12

### Affordable Housing

Bigelow Village .....8  
Sherwood Village, Natick .....24  
Sitkowski Apartments.....21

### Assisted Living

Oasis at Dodge Park .....14  
Residence at Orchard Grove...22

### Attorneys, Elder Law

Durbin & Veglia, Attorneys .....21

### Banking Services

Avidia Bank .....10

### Cemetery/Mausoleum

St. John's Cemetery  
& Mausoleum .....13

### Dentists

Dental Solutions .....11

### Fitness

YMCA of Central MA .....23

### Funeral Homes

Shaw Majercik Funeral Home..23

### Hearing Services

Brookline Hearing Services.....11  
Magic Bus Hearing.....9

### Home Care Services

Around the Clock  
Home Healthcare .....4  
Care Solutions.....6  
Century Home Care .....15  
Intercity Home Care .....9  
Old Colony Elder Services .....17

### Hospice & Primary Care

Hope Health Hospice .....8

If you use any services listed above, please mention  
you saw their ad in the Fifty Plus Advocate.

### Medical Research Studies

Clinical Pharmacology .....16  
Harvard University .....16  
Harvard/T.H.Chan.....16  
Visual Attention Lab .....16

### Mortgage Financing

Direct Finance .....23

### Real Estate

ReMax Executive Realty .....13

### Recreation/Transportation

Fuller RV .....8

### Rehabilitation

St. Mary's Healthcare .....21

### Senior Services

AARP of MA .....2

### Rest Homes

Goddard Homestead .....1

### Subsidized Housing

Bixby/Brockton Centre.....24  
Coes Pond Village.....18  
Colony Retirement Homes....15  
Congregational Retirement  
Homes, Melrose.....24  
Emanuel Village .....13  
Green Hill Towers .....11  
Hawthorne Hill ..... 8  
Illyrian Gardens .....8  
Lamplighter Village, Canton.....24  
Mt. Pleasant Apartments,  
Somerville .....24

### Veterans Services

VA Boston .....3

### Walk-in Medical Doctors

AFC Urgent Care,  
North Andover, Burlington,  
Saugus, Malden, Waltham,  
Natick, Watertown, Dedham,  
Braintree, Marlborough, New  
Bedford, Worcester .....13

**About the cover photo:** Photographer Beth Oram frequently offers her services to local animal rescue organizations to help promote the valuable work they do. She took the charming cover photo of Marie McDonough, a Baypath Humane Society of Hopkinton, Inc. volunteer, who is holding one of the nonprofit, no-kill shelter's little guests. "I didn't grow up with pets, in fact, I was pretty scared of dogs when I was a kid!" Oram said. "But then, a dog loved me, and everything changed. I'm grateful to have a skill that I can use to help more people and animals become connected, and fall in love." For more information visit [www.bethoramphotography.com](http://www.bethoramphotography.com) and [baypathhumane.org](http://baypathhumane.org).

**fiftyplus**  
advocate

Serving the fifty-plus community since 1975

[www.fiftyplusadvocate.com](http://www.fiftyplusadvocate.com)

**Publisher:** David Bagdon

**Managing Editor:** Bonnie Adams ext. 14

**Creative Director:** Tina Berthiaume

Fifty Plus Advocate is published monthly, 12 times annually by Bagdon Advertising, 32 South Street, Westborough, MA 01581.

Fifty Plus Advocate accepts no responsibility for unsolicited manuscripts or materials and does not return them to sender. Retractions for any inaccuracies will be printed when necessary. Unsolicited letters to the editor become the property of this newspaper and can be reprinted in part or in whole unless otherwise stated. Fifty Plus Advocate columnists writing under a byline are expressing their personal opinions and not necessarily those of the newspaper.

**Contact us: 508.366.5500 - 32 South St., Westborough, MA 01581**

**Advertising Sales:**

**Sales Coordinator :**

Barbara Clifford, ext. 19

Diane Sabatini: ext. 12

Cindy Merchant: ext. 15

Mary Ellen Cyganiewicz: ext. 17



# Pets and People Foundation

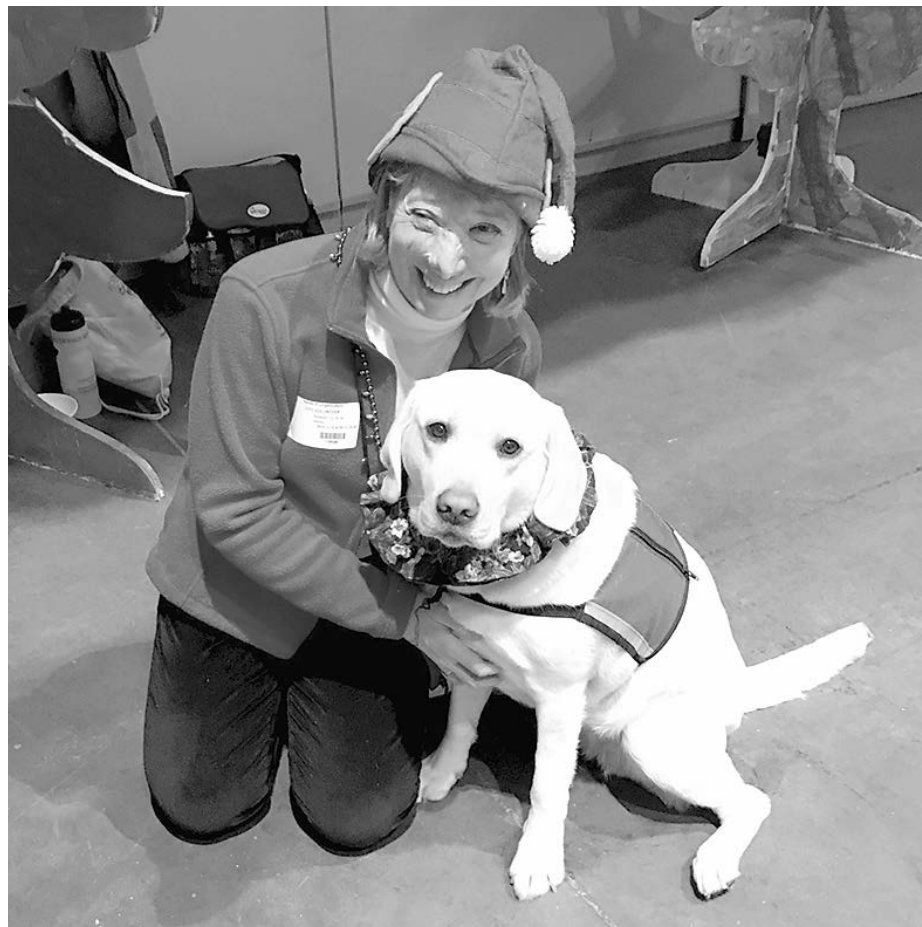
## Offering pet-assisted therapy

By BONNIE ADAMS  
MANAGING EDITOR

Nearly 25 years ago, Joel Wolff and his wife, Penny Schultz, along with their dog, started volunteering as a therapy team. Now, the couple volunteer (and Wolff serves as president) with the Pets and People Foundation, a nonprofit organization that offers “people therapy through pets.”

The foundation, started in 1985 and based in Acton, helps coordinate volunteer teams, human and dog (or on occasion, cat), for visits to residents of nursing homes, assisted living homes, special needs facilities, half-way houses, some children’s facilities, and some senior daycare centers and hospitals.

“We go to where people



Penny Schultz with “Aspen”

PHOTO/JOEL WOLFF

there,” as the more popular member’s escort.

“Ninety percent of the time they know the dog’s name but not yours,” he laughed.

Not every dog is cut out to be a therapy dog, just as not every person is suited for the work. The foundation ensures that both the human and the dog are extensively vetted before they are certified.

“We have been in existence for 32 years and have never had a biting incident,” Wolff said. “I attribute that to our certification process.”

Wolff said that many times an older rescue dog might actually be a better candidate for a therapy dog as opposed to a younger puppy.

“The rescue dog will have already had some evaluation and possible problems noted,” he said.

The foundation is based in Acton but teams make visits from Eastern Massachusetts from Worcester east to the Atlantic ocean, and from Falmouth north to the border with New Hampshire. There is no charge for the visits. A small fee is assessed for the testing of teams which helps pay for the organization’s expenses.

As their website states, “our budget comes entirely from donations, and our inspiration comes from the people whose faces light up when a dog, cat or other animal comes walks into a room to give unconditional love and attention to someone in need.”

Volunteers are also always needed, Wolff said, for help with administrative tasks or fundraising.

“If you believe in our mission, but don’t or can’t do therapy visits, there are still ways to help. We’d love to have you!” he said.

For more information, call 617-600-4670, email [info@petsandpeoplefoundation.org](mailto:info@petsandpeoplefoundation.org) or visit [www.petsandpeoplefoundation.org](http://www.petsandpeoplefoundation.org).

need comfort,” Wolff said. “It could be an assisted living facility to visit seniors. Sometimes we go to libraries for reading programs. Kids might feel uncomfortable reading in front of other kids or adults but not a dog. Dogs are not judgmental.”

Teams have also started visiting local high schools to help students during final exam periods. Sometimes it’s a more somber occasion when a loving dog is needed as a recent time when Wolff and his dog met with students at Acton-Boxborough High School to offer support after the loss of two of their fellow classmates who had recently passed away.

A Westborough couple, Tania and Bob Pano, brought their Golden Retriever, Cassie, and two Scottish Fold cats, Lynsey Lu and Mackenzie Connor, to comfort those who gathered at the finish line of the Boston Marathon after the tragic 2013 bombings.

Wolff knows that being the human member of the team often just means “just being



### Care Solutions, Inc.

PROVIDING QUALITY CARE IN YOUR HOME

*Proud to be your locally owned and privately held home health care provider in Westboro since 1997*

**10% Off!!!**

First Time Clients  
Mention This Ad  
& Receive 10% Off  
Your First Invoice!

**Ask about our  
“Home But Not Alone”  
Program**

#### Specialty Services Include:

- Home Health Aides, Homemakers, Companions
- 2 to 24 Hour Care
- Live-In Care
- Individualized Wellness Plan
- Dementia Care
- 24 Hour On-call
- In-Home, On-site, On-going Supervisions
- Licensed, Insured and Bonded



Stay home with quality care customized to meet your needs. Please call our Care Coordinator at 508-366-5689 to learn more.

**www.care-solutions.net • email: [info@care-solutions.net](mailto:info@care-solutions.net)**



# Sharing love of music from Westborough to Grafton

By ED KARVOSKI JR.  
CONTRIBUTING WRITER

**GRAFTON/WESTBOROUGH** – While working a 25-year banking career, Cam Sowa also spent periods of time regularly traveling distances from her Westborough home to play flute at several out-of-town venues. Now retired, she's enjoying her nearby and longtime musical relationships with St. Stephen's Episcopal Church in Westborough and Apple Tree Arts (ATA) in Grafton.

Perhaps an acceptance of travelling began when her father's work as a chemical engineer moved the family a few times. While living in upstate New York, Sowa attended a school with a new band. Students were tested to determine if they had the qualifying skills for a music class.

"I passed the test," she declared. "They asked us what instrument we wanted to play. The only instrument I thought I'd like was the flute. A flute sounds pretty and adds so much to melodic pieces."

The family lived in New Jersey when Sowa was a seventh-grader playing flute in her school orchestra and marching band. She fondly remembers coming home from school and hearing her mother playing Frederic Chopin compositions on the piano. They'd spend afternoons listening to classical music together on a record player.



Cam Sowa

Another move brought the family to Massachusetts. While scouting for a house during the summer, they lived in a cottage at Lake Quinsigamond in Shrewsbury. Come September, Sowa attended Shrewsbury High School with hopes of playing flute in its marching band.

"To join the band, one had to audition," she recalled. "My skills weren't up to par, so I didn't make it into the band and was very disappointed."

Two months later, the family settled in Westborough in 1957. Westborough High School provided her flute lessons and welcomed her to play in its marching band. Since that move, she has called Westborough her home and St. Stephen's Church her parish.

While raising her daughters Cindy and Michelle, Sowa rekindled her love for music in

the mid-1980s. She joined a musical group at St. Stephen's called On Eagles Wings. They toured the Episcopal Diocese of Western Massachusetts.

Among their performance venues was a church in Whitinsville. After their concert, a parishioner invited Sowa to join a new flute choir based in Northbridge. Sowa accepted the invitation and performed with them for two years.

Closer to her home, Sowa played flute and piccolo in the musical "Annie, Get Your Gun" with the Westborough Players' Club during its 1987-'88 season. Soon afterward, she heard that a flute choir was starting at the Thayer Performing Arts Center in Lancaster. She auditioned and was accepted to perform with the choir.

In 2000, a St. Stephen's parishioner asked Sowa if she'd give their daughter flute lessons. She did instruct her and ultimately more students with private lessons.

"I taught for a couple years, but then I worked my banking job for 10 hours a day, so couldn't do it anymore," Sowa explained.

In 2007, a neighbor and friend suggested that Sowa join the ATA Community Chorus in Grafton. She somehow found time to give it a try.

"I told my friend that I couldn't sing," Sowa relayed. "My friend said, 'Join anyway – you can learn to sing.'"

Sowa did learn to sing. Additionally, since 2008, she has served as the ATA board vice president. She also yearned to return to playing flute. Sowa took flute lessons for three years from the same teacher who instructed her daughter Cindy while in high school. Now, Sowa still sings with the ATA chorus and joined its flute choir in retirement. She appreciates the opportunity to volunteer with ATA, a nonprofit community school serving varied types of artists from young children to adults.

"I'm very pleased to be a part of such a great organization as ATA," she said. "What we do there is good for so many people of all ages."

Her longtime commitment to music ministry also continues at St. Stephen's. She served a three-year stint as its music coordinator and now performs with the church choir.

"It's great to be involved in the community, especially with nonprofits because they help so many people in a lot of ways," she said. "As we get older, we need to keep active and do good work. To me, that's what it's all about."

## Are you looking for Housing? Let us help!

**fiftyplus**  
advocate

Please contact me regarding the housing opportunities I've checked off below.

**SEND THIS COMPLETED FORM TO:**  
**ATTN: FREE FIFTY PLUS HOUSING INFORMATION**  
**32 SOUTH STREET, WESTBOROUGH, MA 01581**

### AFFORDABLE HOUSING

☐ Bigelow Village - Rutland

### ASSISTED LIVING FACILITIES

☐ Dodge Park Oasis - Worcester  
☐ Goddard Homestead - Worcester  
☐ The Residence at Orchard Grove - Shrewsbury

### REST HOMES

☐ Dodge Park - Worcester  
☐ Goddard Homestead - Worcester

### SUBSIDIZED APARTMENTS

☐ Bixby/Brockton Centre - Brockton  
☐ Coes Pond Village - Worcester  
☐ Colony Retirement - Worcester  
☐ Congregational Retirement Homes - Melrose

### SUBSIDIZED APARTMENTS Cont'd

☐ Emanuel Village - Worcester  
☐ Green Hill Towers - Worcester  
☐ Hawthorne Hill - Rutland  
☐ Lamplighter Village - Canton  
☐ Mt. Pleasant Apartments - Somerville  
☐ Sherwood Village - Natick  
☐ Sitkowski School Apartments - Webster

NAME \_\_\_\_\_  
ADDRESS \_\_\_\_\_  
CITY \_\_\_\_\_  
STATE \_\_\_\_\_ ZIP CODE \_\_\_\_\_  
PHONE \*( ) \_\_\_\_\_

\*Your phone number is required to process your request. It will be used only in regard to the properties that you have marked.



A state of the art, affordable retirement village in Rutland **starting at \$140,000.**



**SUMMER SALE! MODEL FOR \$154,500**

Call for an Appointment.



Bigelow Village

Create and design your own home  
Call 508-886-6565 for more information  
**bigelowvillage.com**

Lighting the way to a new beginning • Conveniently located near town center  
Maple Avenue • Rutland, MA (½ mile from town center)

**TRY BEFORE YOU BUY!**



Celebrating 33 Years in Business

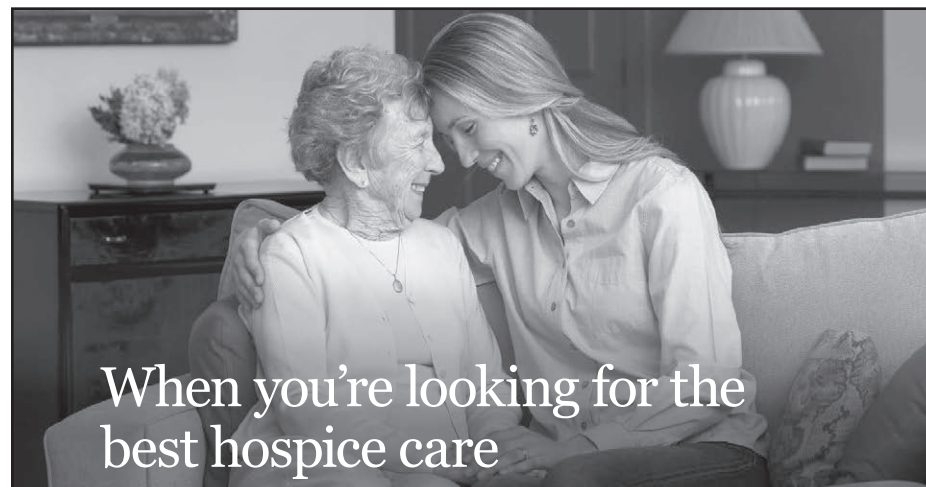
**FULLER RV**  
RENTALS & SALES

No Special License Required



CLASS A, B & C MOTOR HOMES • TRAILERS • TEMPORARY HOUSING • TRANSPORTATION

150 Shrewsbury St. Boylston • 1-508-869-2905 • **www.fullerrv.com**



When you're looking for the best hospice care

## Look to Hope.

Hope Hospice has provided care and support for those facing serious illness for over 35 years. Our dedication, respect and compassion help provide the best quality of life possible. That's why so many families look to Hope for hospice care.

To learn more, call 508.957.0200 or visit **HopeHospiceMA.org.**



**Hope Hospice** SM  
Touching Lives

Part of the HopeHealth family of services

Hope Hospice | Hope Care For Kids  
Hope Dementia & Alzheimer's Services | Hope Academy

**"Country Living in the City."**



1 bedroom and efficiency affordable HUD subsidized apartments. Rent is 30% of adjusted income. Heat and utilities included. 62 years or older or disabled.

Professionally managed by Barkan Management Company.

For an application or an appointment  
call 508-753-7217.

**ILLYRIAN GARDENS, Inc.**

Illyrian Garden Apts. ~ 545 Salisbury Street, Worcester, MA



## Hawthorne Hill Elderly Housing

Phase I & II • 106 Main Street, Rutland, MA 01543



Bright & airy one bedroom units, both subsidized and non-subsidized.

Elderly & disabled rental units.

"62 years of age or older,

handicap/disabled regardless of age."

Eligible tenants pay 30% of monthly income.

HUD Section 8 Subsidy and USDA/RD Rental Assistance.

To obtain applications, please call Brenda  
at 508-886-6920 • TDD 1-800-439-2370

Laundry Facilities • Community Rooms • Accessible Units



"This institution is an equal opportunity provider and employer"





# Holocaust survivor speaks to middle school students

By JANE KELLER GORDON  
CONTRIBUTING WRITER

NORTHBOROUGH - The entire 8th grade class at Robert E. Melican Middle School in Northborough sat hunched forward - almost breathless - during an assembly on May 17. It was Holocaust survivor Sam Weinreb (91) who held their attention.

For a full hour, over-and-over, Weinreb said to them, "I want you to know, I want you to know."

He told his remarkable story in great detail, as he has to over 300,000 students.

"I never said no when I was asked to speak to a group of people," said Weinreb.

Since moving to Brookline with his wife Goldie two years ago, Weinreb speaks about once a week. His connection to Melican is his neighbor who is the grandmother of eighth-grade student Lainey Bechta.

Introducing Weinreb, Bechta spoke of how her class read



(l to r) Sam Weinreb, Lainey Bechta (8th grade student), and Kay Senior (8th grade teacher)

"Night" by Elie Wiesel, and "The Diary of a Young Girl," by Anne Frank.

Like many survivors of the Holocaust, fortitude and luck played a huge role in Weinreb's survival.

Born April 5, 1926 in Bratislava, Czechoslovakia, Weinreb was almost 13 when the Nazis

captured his parents, two brothers, and six-year-old sister. He returned from a bar mitzvah lesson to find his house locked and empty. He never saw them again.

Weinreb escaped to Hungary - by train and on foot - with the help of a non-Jewish neighbor, and two others.

He lived in Budapest with an

uncle for a few weeks, until someone reported them to the police. He planned to move on to another contact, but that person was reported as well.

For eight months, Weinreb lived on the streets, eating food from trash bins.

Weinreb said, "Finally, I got so upset that no one would help me that I went to the police station and told them I lost my whole family, and that my grandparents lived in Hungary. The policeman slapped me in the face. Then they sent me to prison, with no charge and no trial."

He was released after two harsh years.

"I was told that I would stay with my grandparents, who lived in a small remote town. Every Tuesday and Friday I needed to check in with the police. Those days the police called me names and beat me."

Six months later, the Nazis entered Hungary, and rounded up

Survivor page 10

**DO YOU NEED HEARING AIDS  
BUT HAVE BEEN QUOTED 4,5,\$6000**

**We Can Help!**  
**Magic Bus Hearing**



**We are a fully equipped mobile lab.  
We come to you!**

**Top Brand Hearing Aids  
At Half The Price**

**100% Money Back Guarantee**  
Call for your *free* Hearing Test now!

**855-500-5250**

**www.magicbushearing.com**



**INTERCITY<sup>SM</sup>**  
**H O M E C A R E**

*Providing Quality Care Since 1967*



Intercity Home Care is a family owned and operated full service agency. We're committed to providing quality care and supportive services for people who need assistance to remain safe and independent in their own home. Call us today to learn more about our services.

**Personal Care • Companionship  
Homemaking • Caregiver Support  
Geriatric Care Management  
Nursing Care • Alzheimer's Care**

**HAVE A SAFE AND HAPPY  
FOURTH OF JULY**



**Call to schedule your free in-home assessment.  
IntercityHomeCare.com / 781-321-6300**



# Holocaust survivor speaks to middle school students

## Survivor

Continued from page 9

all of the Jews, including Weinreb. Jammed into cattle cars, they were sent by train to the death camp, Auschwitz-Birkenau. Many died - especially children - during the almost four day journey.

At the entrance of Auschwitz, Weinreb, then 17, found himself in the left line, with those sent to work. Everyone in the right line was immediately gassed.

For work, Weinreb carried bricks to a construction site, which in fact, was not a site at all. He survived a job at a coal mine thanks to other prisoners who shoveled coal into his pile. He could not lift the shovel.

With clear memory, Weinreb recalls meeting Elie Wiesel, who advised him how to survive roll calls by moving around the lines at Auschwitz.

Before the war ended, on a freezing cold night, Weinreb and his fellow prisoners were forced

out of the camp on a death march. According to Weinreb, "... only 400 of 5,000 survived."

He decided to escape.

"I thought to myself, 'I will not let them kill me,'" he told the students.

In the middle of the night, he ran until he reached a forest and collapsed.

Weinreb was told that Russian soldiers found him lying on the ground, unconscious.

"One told me, 'Son, don't worry, we are going to take you to a military hospital.' I weighed 80 pounds then. I spent six weeks there. They saved me," he said.

When he recovered, Weinreb returned to Bratislava to find his family. He did not, but reunited with his childhood friend Goldie, who later became his wife.

At that time, Weinreb chose to leave Czechoslovakia and move to a displaced person's camp in Germany, which was supervised by the Americans.

Goldie would not go with him, but they stayed in touch, and she encouraged him to go to America. That happened with the help of an officer from the American Embassy in Munich.

"The officer put his arms around me and said, 'Son, you are going to America, right now,'" he recalled.

Weinreb eventually brought Goldie to America. They have celebrated their 67th anniversary. They raised a son and daughter in the Pittsburgh area, where Weinreb became an expert watch repairer, and eventually, owner of

a jewelry store.

His wife has been living with Alzheimer's for 14 years, but she is a survivor, and she is still here.

Weinreb wrapped up his talk by saying, "It is now more than 75 years since the liberation of Auschwitz. That is a very long time. This is a difficult subject. I didn't have an easy time talking about this in the beginning. Now I can."

At that point, the eighth graders - witnesses to history thanks to Weinreb's willingness to share his deeply personal story - all took a deep breath and applauded.

## Miniature horse 'Rosie'



PHOTO COURTESY OF BARBARA SHAER

"Rosie" brings joy wherever she goes.

## Rosie

Continued from page 4

right up to everyone, whether they are in a chair, wheelchair or a bed. She will gently just put her head right in their laps so they can get nuzzle with her."

Rosie has a "bond with all ages," Shaer said, whether it is a child who wants a ride or to offer a kiss, a mentally or physically challenged teen who lights up upon seeing her or an elderly person who, although unable to communicate, still feels the magic that Rosie brings.

"So many people are trapped inside their own bodies," Shaer said. "To be able to have that

bond with these people and to bring them a sense of joy is so special. It may just be for a day, it may just be for a moment in time, but to offer this gift to them is very special."

The two will also go to help with many fundraiser events, many times accompanied as well by Mason.


"Rosie is always a draw!" Shaer said.


Rosie has her own Facebook page ([www.facebook.com/RosietheMini](http://www.facebook.com/RosietheMini)) where Shaer documents their visits. On it, the photos tell the story of just how much joy this little horse can bring into the lives of all she meets.

**adventurous**

*energetic*

**positive**







**Avidia Bank**

800-508-2265

[avidiabank.com](http://avidiabank.com)



Member FDIC | Member DIF







## Brookline Hearing Services



*Judith Arick, Au.D*  
*Suzanne Arick Rakov, HIS*  
*Jenna Karcher, Au.D*

**Brookline Hearing Services**  
 1842 Beacon Street, Suite 403  
 Brookline, MA 02445

**617.232.1299**  
[info@brooklinehearing.com](mailto:info@brooklinehearing.com)  
[www.brooklinehearing.com](http://www.brooklinehearing.com)

**We're here for all your hearing needs!**

- Located between Washington Square & Cleveland Circle in Brookline.
- Now accepting MassHealth along with most insurance companies.
- Selling all major brands of hearing aids, custom musicians earplugs, monitors and ear protection.
- On the C & D MBTA lines • Accessible building

**NOW ACCEPTING  
NEW PATIENTS  
& MOST  
DENTAL  
PLANS**



NEW PATIENT  
SPECIAL OFFER

\$69

\*CLEANING, EXAM/  
CHECK-UP & X-RAY  
Not to be combined w/any  
other offers. Must present  
insurance at visit and we  
will bill them directly.



**Dental Solutions  
of Northboro**

FAMILY DENTISTRY

The first thing people notice is your smile.

508-393-4777

367 WEST MAIN STREET, NORTHBORO  
[WWW.DENTALSOLUTIONSOFNORTHBORO.COM](http://WWW.DENTALSOLUTIONSOFNORTHBORO.COM)



ENDODONTIC  
SERVICES

Jasna Kun, DMD



PERIODONTICS &  
DENTAL IMPLANTS

Anthony T. Quinta, DMD

**OUR TEAM  
INCLUDES:**

Jasna  
Kun, DMD

Anthony T.  
Quinta, DMD

Dalia  
Jukneliene, DMD

Yunji Lee, DMD

# NEWLY REMODELED APARTMENTS with a contemporary flair



- Contemporary styled 1 & 2 bedroom apartments
- New kitchens with built-in microwaves and granite-like countertops
- Small pets welcome
- Heat and Hot water included
- Bus route / ample parking
- Beautiful landscaped grounds with gazebo

- Within the building amenities include:
  - A Theater-like media center
  - Handicap-accessible lounges on every floor
  - Library equipped with two computers and free internet access
  - Physical fitness center
  - Game room with billiard table
  - Community room with bingo board and large screen TV

## Green Hill Towers

27 Mount Vernon Street, Worcester, MA 01605 • OFFICE OPEN DAILY 8:00AM - 4:30PM

*To receive an application please call 508-755-6062 TDD# 508-755-0228*

Available occupancy to income eligible mature adults (age 62 years & older) or permanently disabled. Applicants must meet HUD annual low income guidelines. Preference is given to individuals 62 and older.



Managed by

**CORNERSTONE**  
Corporation

Financed by MHFA





## travel and entertainment

# Charlottesville brings America's history to life

BY VICTOR BLOCK

The mansion in Virginia which Thomas Jefferson called Monticello is a perfect example of an 18th-century estate. Its 33 rooms are filled with elegant furniture and architectural touches imported from Europe.

About 10 miles away stands Pine Knot, a simpler cottage that lacks a stove, well and bathroom facilities. Theodore Roosevelt preferred its modest ambience as a place to escape from the pressures of life as president.

These two houses say much about the men who once stayed in them. They're among the attractions in Charlottesville, Va., that bring to life chapters of the nation's past.

Nearby is one of the places that makes Charlottesville synonymous with Thomas Jefferson. He placed high on his list of accomplishments founding the University of Virginia as an "Academical Village" available to students regardless of their birth or wealth.

Visitors see it much as it appeared when it opened for classes in 1825. Pavilions surrounding the lawn still house rooms occupied by scholars and faculty. The Rotunda which overlooks the setting is a scaled-down version of the Pantheon



Monticello

in Rome.

Jefferson's architectural genius also is evident at Monticello, his beloved plantation home. Features that he introduced, many gathered when he lived in Europe, include a dumbwaiter, skylights and French doors.

In contrast to the elegance of Monticello is the modest

cottage where Roosevelt stayed with his wife Eleanor. Personal touches include a list of birds which he spotted and letters to their children decorated with sketches of cartoon-like figures.

Charlottesville adds life and color to important chapters of the nation's past. That becomes evident during strolls along the

Historic Downtown Mall. The brick-paved walkway is lined by historic buildings that today house shops and restaurants. During Colonial times the route was called "Three Notch'd Road," named for nicks carved into tree trunks to mark the way.

Introductions to two other presidential homes also support Virginia's nickname as "The Mother of Presidents." Four of the first five presidents, and eight in all, were born in the state.

Guides at Montpelier, the home of James Madison, describe his prominent place in history including his instrumental role in drafting the Constitution and its first 10 amendments, and serving as the fourth president. He authored a number of important documents in the rooms where visitors stand.

The Ash Lawn-Highland plantation was home to the fifth president. James Monroe negotiated the Louisiana Purchase, and the Monroe Doctrine that he established formed the cornerstone of America's foreign policy for more than a century. Visitors are immersed in the atmosphere of a working farm, including demonstrations of spinning, weaving and open-hearth cooking.

A setting very different from plantation homes is tucked into a horseshoe bend of the James

Travel page 14

## Our adult day care is there for you.

- Supervised care up to 12 hours per day. More affordable than any other care option.
- The day club allows members to spend the day in a comfortable, stimulating environment.
- Perfect for working caregivers or to give you a respite from caregiving.
- Memory impaired welcome.
- Daily Activities Include: *Exercise, Music, Art and Intergenerational Programs, among others.*
- Meals included.
- You can choose a schedule that fits your lifestyle; 1 day or as many as 7 days a week.
- Transportation in our safe van or handicap bus is available.

"Caring for your family members since 1967."

### THE ADULT DAY CLUB at Dodge Park

101 Randolph Road, Worcester, MA • [www.dodgepark.com](http://www.dodgepark.com)

Call Ben or Mike at 508-853-8180 for a free, no obligation tour.

DAY CLUB AVAILABLE 7AM - 7PM, SEVEN DAYS A WEEK. YOU CHOOSE ONLY THE HOURS YOU WANT!





*Looking to buy or sell  
your home?*  
**Call Gary 508-733-6005**



**GARY KELLEY**  
Realtor®



Gary@MoveWithGary.com  
MoveWithGary.com



## Come see us first ...

Emanuel Village apartments offer affordable senior living to persons who are 62 and older or mobility impaired.

We offer studio, one-bedroom and mobility impaired accessible apartments.

Applications being accepted for income eligible seniors and/or mobility impaired adults

- HUD subsidized units available
- Includes all utilities and free parking
- Near bus line and shopping



Emanuel Village  
A member of Ascentria Care Alliance

59 Evelyn Street, Worcester, MA 01607  
Formerly Lutheran Social Services of New England



**When your doctor is  
too busy to see you,  
we aren't.**

No Appointment  
Needed

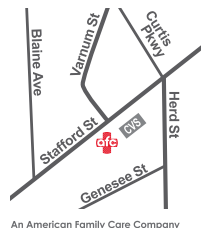
X-Ray & Lab  
Services On Site

Vaccinations  
& Physicals

Most Insurance  
Plans Accepted,  
including Medicare

**AFC URGENT CARE**  
**american family care**  
(formerly AFC Doctors Express)

Getting you better quickly is our number one priority. At AFC/Doctors Express, you'll get the same attention to every single detail that you would from your current family doctor. But you'll get it immediately, right when you need it the very most.



**Located next to CVS**

117 A Stafford Street, Worcester, Ma 01603

Open 7 days a week: M-F 8-8, S-S 8-5

508-755-4010

**DoctorsExpressWorcester.com**

*Grant that our brother may sleep here in peace until you awaken him to glory...* - Prayers of Final Committal

## Pre-planning guarantees your wishes are met.



The loss of a loved one, young, old, expected, or unexpected is traumatic. Making the final arrangements with your funeral home and choosing the cemetery and the final resting place adds more trauma to a very sensitive time. At that time we are asked to make decisions very quickly. All this being said, we can be of assistance in the pre-planning portion and extend to all families an opportunity to benefit from our experience along with easy payment plans and burial options.

## The benefits of pre-planning are significant:

- Spares loved ones the agony of making hasty decisions while under great emotional stress
- Avoids tendency for emotional "overspending"
- Selections are less limited than in the future
- Affords the piece of mind that comes with the knowledge that everything will be handled according to your wishes
- Avoids inflation by purchasing at today's prices

***Our office will be happy to assist you  
in your family's pre-planning process***

# ST. JOHN'S CEMETERY & MAUSOLEUM

260 Cambridge Street, Worcester • 508-757-7415

Office Hours: Monday - Friday 8 a.m. - 4 p.m.; Saturday 8 a.m. - noon



# History and beaches abound in St. Augustine

## Travel

Continued from page 12

River south of Charlottesville. The village of Scottsville (population about 600) was a river port during the 18th century. Flat-bottomed boats transported tobacco, grain and other cargo to Richmond, and returned with goods imported from England and France.

A small museum recounts the story of the town and river. Exhibits in the Canal Basin Square include a packet boat, which over 150 years ago plied the James River, and a list of tariffs charged for transporting cargo and passengers. Among fares were “White person, 12 and older, 1 cent per mile” and “Coloured persons, 5 and up, 1/2 cent a mile.”

No trip to Charlottesville would be complete without at least one stop at a winery, and even here the influence of Thomas Jefferson is felt – or,



Charlottesville's Historic Downtown Mall

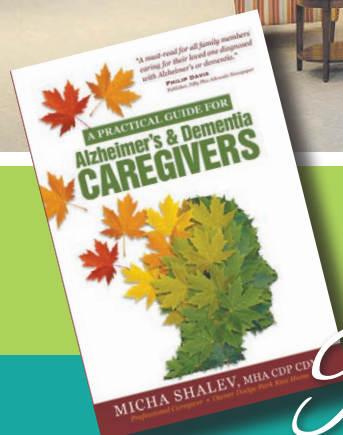
PHOTO SUBMITTED

rather, tasted. He planted vineyards and dreamed of producing wines equal to those of the Old World. However, a series of misfortunes doomed that effort, and for some 200 years, Virginia's infant wine industry failed to achieve distinction.

That changed recently as local winemakers began to produce improved vintages. Virginia now has some 150 wineries and Jefferson would be proud to know that his native state is the fifth largest producer in the country.

Jefferson's failure as a wine maker pales in comparison with his many achievements, and those of his famous neighbors, who were among the founders of our country. A visit to Charlottesville brings their stories to life in a setting as varied as were those early leaders.

For more information, call 877-386-1103 or log onto [visitcharlotteville.org](http://visitcharlotteville.org).



**We're so passionate about cognitive care that we wrote a book on it.**

*We have a copy for you when you visit!*

## Reserve today!

LIMITED AVAILABILITY DUE TO HIGH DEMAND

**A Revolutionary Alzheimer's and Dementia Residential Care Facility for the Elderly in Central Massachusetts**

Bringing *LIFE* to those we serve  
**OASIS**  
AT DODGE PARK

102 RANDOLPH ROAD, WORCESTER • 508-853-8180/877-363-4775 • [WWW.OASISATDODGEPARK.COM](http://WWW.OASISATDODGEPARK.COM) AND DOWNLOAD OUR FREE INFORMATIONAL BROCHURE





#### Personal Care Assistance

- Home Health Aides
- Diabetes Care
- Dementia/Alzheimer's Care
- 24-Hour Care
- Private Duty

#### Skilled Nursing

- Post Surgery Care
- Wound Care
- Medication Management
- IV Administration

#### Rehabilitative Therapy

- Physical Therapy
- Occupational Therapy
- Speech Therapy
- Respiratory Therapy

## Your Recovery... In Your Own Home

Whether you're recovering from surgery, or simply need help with activities of daily living – Century Homecare can help. Our experienced, multi-lingual clinicians can handle even the most complex medical needs. All of our certified services are covered by most major insurances including **Medicare and MassHealth.**



For personalized service, call  
Linda Belsito: (774) 961-9871

Toll Free: 1-888-292-1809  
[www.centuryhomecare.com](http://www.centuryhomecare.com)

65 WATER STREET  
WORCESTER, MA

Accredited by  
Community Health  
Accreditation Program



## Subsidized senior housing with a meal program option that makes us different!



**Colony Retirement Home III** is  
congregate housing for seniors. Enjoy  
nutritious "Home Cooked Meals," served  
in our attractive dining room with your  
neighbors and friends.



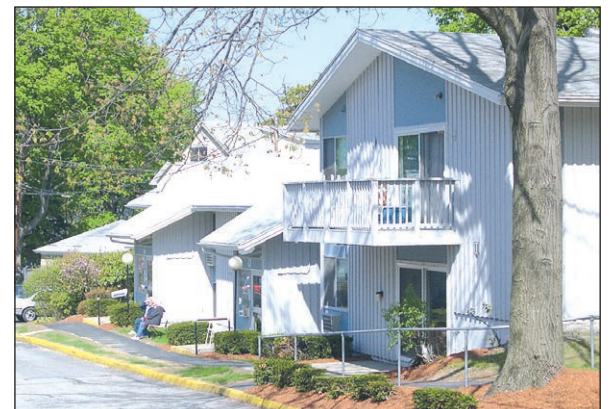
COLONY RETIREMENT HOMES III : Congregate Housing  
101 Chadwick Street, Worcester  
(508) 755-0444



All apartments at Colony Retirement  
Homes receive rental assistance  
through the HUD section 8 program.  
Rent is 30% of your adjusted monthly  
income. Rent includes all utilities  
except phone and cable TV.

Call Monday thru Friday,  
9am to 5 pm for more information.

**Colony Retirement Homes I** are  
garden style studio apartments, located in  
a country-like setting. A short walk takes  
you to shopping centers, banks, restaurants  
and the bus line. A little bit of the country  
adjacent to the city.



COLONY RETIREMENT HOMES INC. I  
485 Grove Street, Worcester  
(508) 852-5285



## COLONY RETIREMENT HOMES

Worcester, MA Not For Profit Corporation [www.colonyretirementhomes.com](http://www.colonyretirementhomes.com)





# Volunteering in the community - Scituate Animal Shelter

BY BONNIE ADAMS  
MANAGING EDITOR

**A**s a nonprofit no-kill animal shelter, the Scituate Animal Shelter helps over 500 dogs and cats find their new forever homes every year,

according to Executive Director Maryann Regan. The organization is primarily volunteer-run and funded solely by private donations.

"Most times we have 20 to 50 animals, depending on the time of the year," Regan said.

"We mostly have dogs and cats but occasionally have a rabbit, rat or ferret."

The shelter has a small staff, which makes the 200-plus volunteers critical to its ongoing success. Many of those volunteers, Regan noted, are over the age of 50.

"They do everything for us, from cat care, dog walking, working at the front desk, administrative work, youth outreach/education, landscaping, and so much more," Regan said. "They are so

Volunteering page 17

## • MEDICAL RESEARCH STUDIES •

### Contribute to the Understanding of Visual Cognition In Aging

#### Are you healthy and over the age of 65?

The Visual Attention Lab is seeking **healthy volunteers aged 65-85**.

Participants of our studies will have to pass vision and cognitive tests, and perform a computer-based experimental task. No invasive methods and no medication involved.

• 2 - 5 hours time commitment • \$11/hr reimbursement for your time

Call 617-768-8814 or send an email to [study@rics.bwh.harvard.edu](mailto:study@rics.bwh.harvard.edu).



BRIGHAM  
AND  
WOMEN'S  
HOSPITAL

#### Visual Attention Lab

Brigham & Women's Hospital, Harvard University  
64 Sidney Street, Cambridge, MA 02139, USA  
[iwiegand@partners.org](mailto:iwiegand@partners.org)



## SENIORS

### CONTRIBUTE TO THE UNDERSTANDING OF AGING AND COGNITION

Are you healthy, mentally active, over the age of 65?

**The Aging and Cognition Lab is looking for subjects**

The experiment explores effects of aging on cognition.

Noninvasive and no medication involved.

- 2 hour time commitment
- Provides \$15/hour

Call (617) 495-3856

Department of Psychology  
HARVARD UNIVERSITY

### ...BECAUSE MEMORIES ARE WORTH FIGHTING FOR



## DIET INTERVENTION TO PREVENT ALZHEIMER'S

This 3-year research study is designed to compare two weight loss diets and their effects on brain health and cognitive decline. It uses lifestyle and behavioral changes to help you lose weight and live healthier. Your participation in this research study is completely voluntary.

For more information, visit our website

[www.mind-diet-trial.org](http://www.mind-diet-trial.org)



SCHOOL OF PUBLIC HEALTH  
Powerful ideas for a healthier world

Harvard T.H. Chan School  
of Public Health is looking  
for research participants

BETWEEN THE AGES OF  
65 and 84

WITH A FAMILY  
HISTORY OF  
ALZHEIMER'S DISEASE

AND A BMI  $\geq$  25

INTERESTED IN  
LEARNING MORE?

Visit our website:

[www.mind-diet-trial.org](http://www.mind-diet-trial.org)

#### MIND OFFICE

(617) 998-6333  
[mindstudy@hsph.harvard.edu](mailto:mindstudy@hsph.harvard.edu)

HARVARD T.H. CHAN  
SCHOOL OF PUBLIC  
HEALTH

401 Park Drive/Landmark Center  
Boston, MA 02215

## Rheumatoid Arthritis ?

### Is your present RA treatment ALL that it can be?

If you are not in a complete clinical remission and continue to have joint stiffness, pain or swelling, there are new and advanced therapies available that may relieve your symptoms. These include:

- Currently FDA Approved Biologic and Non-biologic Medications.
- New Investigational Treatments Being Developed to Completely Control the Pain and Progression of RA.

These clinical trials provide all medications and evaluations at  
**NO COST to you or your insurance.**

WE ALSO PROVIDE CONTINUING CARE AND 2<sup>ND</sup> OPINIONS FOR RA

**Clinical Pharmacology Study Group, Worcester MA**



to learn more, call:

**508-755-0201**

Charles Birbara MD, Medical Director,  
Associate Professor of Medicine,  
UMASS Medical School



# Volunteering in the community - Scituate Animal Shelter

## Volunteering

Continued from page 16

important in keeping the shelter going. There is so much love, respect and commitment here.”

The shelter’s main goal, of course, is finding homes for the animals. But they also do community outreach and education, which includes actively working with seniors in Scituate to help them to be able to keep their animals.

The Mary Hooper Elder Pet Care Program (HELP) provides emergency assistance with pet food when needed and may be able to assist with medical needs of pets when possible. The shelter can also offer basic checkups and assistance with vaccines.

“It’s tragic and sad when a person has to give up their pets,” Regan said. “We know what’s



PHOTO/SCITUATE ANIMAL SHELTER

(l to r)  
**Scituate  
Animal  
Shelter  
volunteers  
Diane  
St.Ours,  
Mariette  
Ouimet, and  
Charlotte  
Lawrence**

best is for the animal and the person is for them to stay together. We truly believe in helping people as well as animals.”

If you yourself are not a dog or cat owner, volunteering

at the shelter is a great way to get your fix of furry love. But if dog walking or cat care is a bit too much physically, you can offer to volunteer with such other things critical to keeping

a nonprofit going such as helping with administrative tasks, managing databases and mailing lists; helping with public relations and social media, or volunteering with fundraising efforts. If you don’t have time for a full-time pet, serving as a foster family might be a short-term option. (During kitten season, there is always a need.)

“Whatever your skill, we can use it,” Regan said. “The only requirements are that you are kind to animals and can work with people.”

The shelter is located at 780 Chief Justice Cushing Highway, Scituate. For more information call 781-544-4533, email [info@scituateanimalshelter.org](mailto:info@scituateanimalshelter.org), visit [scituateanimalshelter.org](http://scituateanimalshelter.org) or Facebook (Scituate Animal Shelter of Massachusetts).

## An exotic kind of love

BY BONNIE ADAMS  
MANAGING EDITOR

Belinda Rempelakis’s first foray into the world of animal rescue came, as it so often does, at the behest of her daughter. But although Rempelakis does have a much-loved rescue dog, 14-year-old Peanut, it is another group that she is most passionate about rescuing – so-called exotics – mice, rats and ferrets.

Her work as a rescuer of this unique group started when her daughter, Andrea, was working at a local pet store while in high school. A little mouse, who was missing an eye, was deemed unsellable and therefore available for employees to adopt.

“She called me up and asked,” Rempelakis recalled with a laugh, “and I said, ‘why not?’”

When Andrea and then her sister Emily moved onto college, Rempelakis, who was then also working from home, had a desire to fill her empty nest. With the total support of her husband, Mike, she decided to go to the local MSPCA to adopt more mice and then rats, of which she



PHOTO COURTESY OF BELINDA REMPELAKIS

**Belinda Rempelakis with  
“Diesel” and “Bandit”**

had when she was younger. Ferrets were then later added into the family. Currently she has four rats, six mice, and six ferrets.

Much of what she has learned about caring for these exotics has been by “trial and error,” she said. She is also diligent about getting them proper medical care, of which she readily admits, is an “expense.” At least three hours a day are devoted to care, feeding, cleaning and

playtime. Vacations with Mike are hard to come by as exotics cannot just be left to the care of just anyone – it requires someone with the knowledge needed.

Not only that, many of the exotics she adopt tend to be “seniors or ones with special needs, the ones who no one else is interested in.”

All of this is worth it, she stressed.

“These are our babies and this is their forever home,” she added.

It is gratifying, she noted, when the love and care she gives her rescues comes back to her.

“There’s a level of trust that has to be earned depending on what situation they were in,” she said. “But when they do trust, it’s beautiful.”

Rempelakis acknowledges that while her situation may seem unusual, the inherent need to feel fulfilled and help others is not.

“If you find yourself at loose ends, maybe like I was, an empty nester, then find someone to help,” she said. “There are plenty of animals, kids or others who need your help. Volunteer and help someone.”

**VOLUNTEER**

The Retired and Senior Volunteer Program of Plymouth County  
RSVP supporting you and your community!

SENIOR CORPS  
RSVP

**Old Colony Elder Services**  
Providing services to the community since 1974  
**508-584-1561 • www.ocesma.org**



## caregiving tips

# How to stop a loved one with dementia from driving

By MICHA SHALEV  
MHA CDP CDCM

When an individual is diagnosed with dementia, one of the first concerns that families and caregivers face is whether or not that person should continue driving. A diagnosis of dementia may not mean that a person can no longer drive safely. In the early stages of dementia, some – though not all – individuals may still possess skills necessary for safe driving. Most dementia, however, is progressive, meaning that symptoms such as memory loss,



## Caregiving Tips

visual-spatial disorientation, and decreased cognitive function will worsen over time. This also means that a person's driving skills will decrease and, eventually, he or she will have to give up driving. Many people associate driving with self-reliance and freedom; the loss of driving privileges is likely to be upsetting. Some individuals, recognizing the risks, will limit or stop driving on their own. Others may be unable to assess their own driving skills and may insist on driving even when it is no longer safe. Families and caregivers may have to intervene when an individual's symptoms pose too great a traffic risk.

You can assess an individual's level of functioning by observing his or her day-to-day behavior outside of a motor vehicle. Following are some signs that a person no longer has the necessary skills to drive safely. The loved one:

- Has become less coordinated.
- Has difficulty judging distance and space.
- Gets lost or feels disoriented in familiar places.
- Has difficulty engaging in multiple tasks.
- Has increased memory loss, especially for recent events.
- Is less alert to things happening around them.
- Has mood swings, confusion, and/or irritability.
- Needs prompting for personal care.
- Has difficulty processing information.
- Has difficulty with decision-making and problem solving.

It is important to compare present behavior with the person's behavior before the onset of dementia. For example, weigh an individual's degree of "difficulty engaging in multiple tasks" in relation to his or her prior ability. Changes in behavior will be most noticeable to family and friends who have closely interacted with the individual over time. Share and discuss your observations with other family members, friends and health care providers.

The safest option for assessing a person's driving skills is to arrange for an independent driving evaluation. Prior to the evaluation, inform the examiners that the person being evaluated has dementia. Evaluations are sometimes available through driver rehabilitation programs or state departments of motor vehicles (RMV).

Another option is to write an open or a confidential letter to your loved one's primary care physician, expressing your concerns. Fortunately, you might be invit-

ed to the next physical, in which Dad, or Mom or their spouse, may be present. The doctor will do a thorough evaluation, then began to ask either the individual a series of questions, and then finally approaching the subject of "still driving".

You may also want to consider, dependent upon the state in which you reside, would be to contact the RMV in your state. Quite often, you can file a concern with this office and they might (hopefully WILL) follow-up. I know that the state of Massachusetts has some very tough restrictions.

If the individual has some physical limitations, and all family members are on board with this, I would suggest investigating if there are any ride services....often supervised through senior centers, local bus company and even local public transportation services etc., that would give the person both motility, and add safety at the same time. Also, if you live close, maybe family members could share this responsibility and possibly disarm the individual's car.

Ideally, an individual will limit or stop driving on his or her own. However, some individuals with dementia may forget that they should not drive or insist on driving even though it is no longer safe. While it is important to maintain respect for the individual's feelings, you must put safety first.

As a last resort, you may have to prevent his or her access to a car. Some methods to do that include:

- Hiding the car keys.
- Replacing the car keys with a set that won't start the car.
- Disabling or selling the car.
- Moving the car out of sight.

**Micha Shalev MHA CDP CDCM CADDCT is the owner of Dodge Park Rest Home and The Adult Day Club at Dodge Park located at 101 Randolph Road in Worcester. He is a graduate of the National Council of Certified Dementia Practitioners program, and well known speaker covering Alzheimer's and Dementia training topics. The programs at Dodge Park Rest Home specialized in providing care for individuals with dementia and Alzheimer's disease. The facility is holding a FREE monthly support group meeting on the 2nd Tuesday of each month for spouses and children of individuals with dementia and/or Alzheimer's disease. He can be reached at 508-853-8180 or by email at m.shalev@dodgepark.com or view more information online at www.dodgepark.com. Archives of articles from previous issues can be read at www.fiftyplusadvocate.com.**

## Coes Pond Village

### 55 Plus Smoke Free Community

*At least one listed household member on application must be at the age of 55*

**Call Today: 508.756.3594 • TTY/TDD: 800.439.2370**

Is accepting Applications for Waiting List

### 1 & 2 Bedroom Affordable Apartment Homes

**Rents Include Heat/HW,**

**Applicants Must be Income Qualified**

1 Br	50% Rent	Based on 30% Income	80% Rent	\$950 to \$1,263
2 Br	50% Rent	Based on 30% Income	80% Rent	\$1,050 to \$1,411

### Maximum Income per Household Size (HUD) 2017 Limits

HH Size	50% AMI	80% AMI	HH Size	50% AMI	80% AMI
1 Person	\$29,150	\$46,000	3 Person	\$37,450	\$59,150
2 Person	\$33,300	\$52,600	4 Person	\$41,600	\$65,700

Requests for applications must be in writing through US Mail, email or fax, or in person at the management office. The Coes Pond Community has off street parking, community gardens, public transportation available, weekly shopping bus, fitness, computer, sewing center, a hair salon, and community room with many activities throughout the year, on-site laundry facilities, and a library. For more information or reasonable accommodations call 508.756.3594 or email coespond@winnco.com. **Equal Housing Opportunity**

**Coes Pond Village**

39 First Street, Worcester, MA 01602





## money matters

# Reverse Mortgages: Time to trust?

By ALAIN VALLES, CRMP  
PRESIDENT,  
DIRECT FINANCE CORP.

Reverse mortgages are government-insured loans also known as Home Equity Conversion Mortgages (HECMs). These loans allow qualified senior homeowners to



## Reverse Mortgage

convert illiquid home equity into a available tax-free cash for immediate or future use with the option of making no monthly payments as long as real estate taxes and property insurance are paid and other guidelines met.

Current challenges: The facts from various studies over several

An excellent start is to read the only federally approved consumer booklet published by the National Council on Aging, 'Use Your Home to Stay at Home.'

years continue to show that a significant percentage of seniors are very concerned with how they will be financially able to retire in place and have a high quality of life. The top concerns include: increasing costs of daily living; healthcare expenses for current ailments and the worry of future medical events; home repairs; insufficient retirement savings; no pension plan; low Social Security income, no longer able to work, loss of a spouse's income resulting from death or divorce,

and supporting children and grandchildren. These cash flow hurdles can damper the goal of remaining independent in one's home.

Potential solution: According to the U.S. Census Bureau, the 2016 homeownership rate for seniors ages 65 and older was 79 percent with approximately two-thirds owning their homes without a mortgage. Millions of older homeowners have the opportunity to live financially independent in their homes by

utilizing a reverse mortgage. But even though reverse mortgages have been available since 1987, only a small percentage of eligible seniors have utilized a reverse mortgage to augment their financial retirement strategy. The primary reason is lack of trust.

Why the lack of trust: The recent Urban Institute report found that the top concern about reverse mortgages is "getting scammed". Other worries include losing one's home, and the cost. Kent Healy of "The Uncommon Life" states "...our greatest problems are twofold: one, a lack of information and two, perhaps most importantly, a plethora of wrong information." My take is the lack of trust in reverse mortgages is lack of education (uninformed) and pervasive untrue myths about reverse mortgages (misinformed).

Get the facts: The Merriam-Webster Dictionary defines trust  
Reverse mortgage page 20

# SUPER CROSSWORD PUZZLE

"People of the Past"

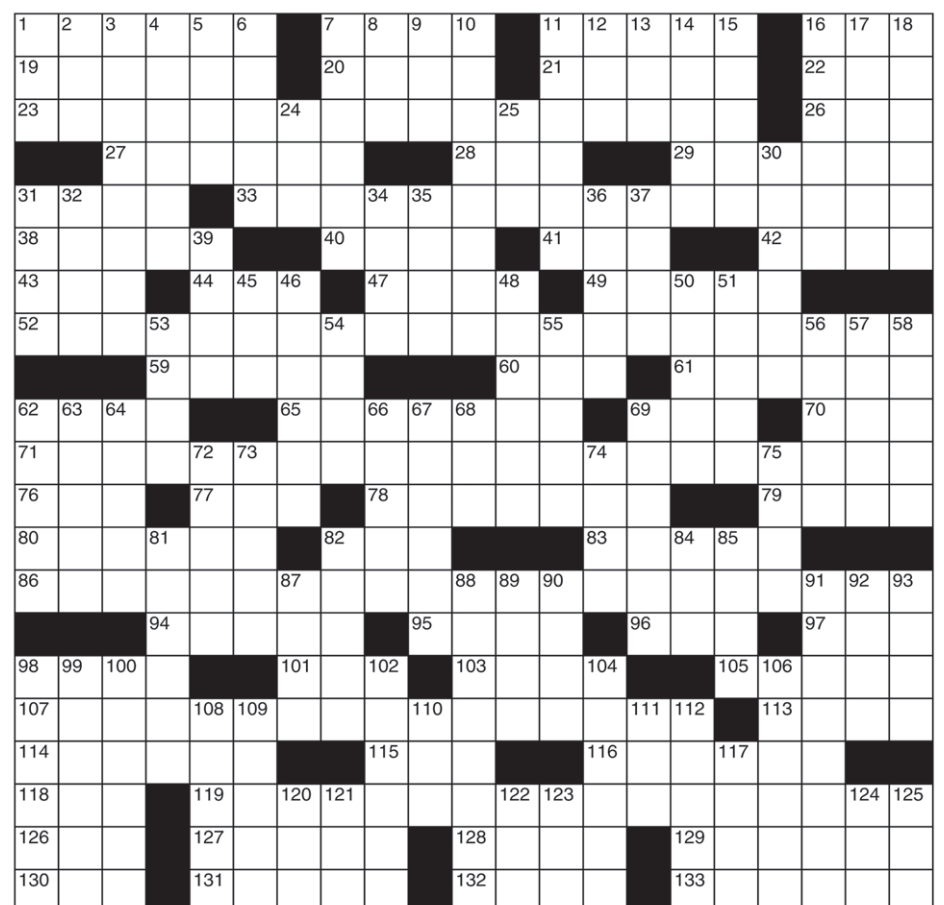
(answers on page 20)

### ACROSS

- 1 Ousts
- 7 Fig. on a new car sticker
- 11 Isle of Minos
- 16 Pro music providers
- 19 Lost lady in "The Raven"
- 20 "That clarifies it"
- 21 Saabs, say
- 22 Use scissors
- 23 Enron scandal figure was inactive?
- 26 Suffix of fruit drinks
- 27 — Pie (cold treat)
- 28 Sternward
- 29 Lucas of film
- 31 By way of, briefly
- 33 "Three's Company" actor started dozing?
- 38 See 82-Across
- 40 Money owed
- 41 Floral wreath
- 42 Pappies
- 43 Lyric writer Gershwin
- 44 Lyric work
- 47 Toe part
- 49 "Lulu" composer Berg
- 52 Watergate whistleblower had anxiety?
- 59 Island near Molokai
- 60 — for "apple"
- 61 Charles of CBS News
- 62 "CSI" actress Elisabeth
- 65 Solar system members
- 69 Ending for pent- or hex-
- 70 Citi Field stat
- 71 Reds great met a tough challenge?
- 76 Santa — (hot desert wind)
- 77 Unveil, in poetry
- 78 Swiss resort lake
- 79 Greek mountain
- 80 "Is there an echo —?"
- 82 With 38-Across, they have film bloopers
- 83 "This —!" (fighting words)
- 86 Teen sleuth noted the subtle difference?
- 94 "Gladiator" actor Davis
- 95 Mrs. Addams, to Gomez
- 96 Bygone flight inits.
- 97 "Aquarius" network
- 98 Chilly
- 101 Hereditary helices
- 103 Small needle case
- 105 Have one's cake and eat —
- 107 "The Ward" actress hallucinated auditorily?
- 113 Te- (giggles)
- 114 Blueswoman Smith
- 115 Fuzz figure
- 116 Machine for sowing
- 118 Become old
- 119 "The Great Ziegfeld" figure caused a road jam?
- 126 UNLV part
- 127 Valuable store
- 128 River of Pisa
- 129 Not coastal
- 130 Pack carrier
- 131 Targeted
- 132 In order
- 133 States of change

### DOWN

- 1 Bugling beast
- 2 Winning sign
- 3 Cochlea site
- 4 Relative of an attaché
- 5 Trying trip
- 6 Take effect
- 7 What to call an English nobleman
- 8 Retirees' fund org.
- 9 Marina del —
- 10 Like a smug know-it-all
- 11 OPEC, e.g.
- 12 Mai tai liquor
- 13 Sked guess
- 14 Pacific island nation
- 15 Actor Will
- 16 U.S. capital and environs
- 17 Deemed
- 18 Infuses
- 24 Wellness gp.
- 25 Awry
- 30 Horse-track has-been
- 31 Slim and fit
- 32 Greek Juno
- 34 Eatery card
- 35 Impose — on (forbid)
- 36 Pages (through)
- 37 — & Stitch
- 39 Long couch
- 45 Room with a 39-Down
- 46 Pass
- 48 Hate
- 50 Horse to bust
- 51 All mixed up
- 53 Abstract artist Paul
- 54 Scrabble pick
- 55 Tight-fisted type
- 56 Karloff of film
- 57 Timber wolves
- 58 City near Minneapolis
- 62 Seville locale
- 63 Hair dye
- 64 Fan of the Jazz, usually
- 66 Attorney or heir follower
- 67 Nutty candy
- 68 Misc. abbr.
- 69 Nails the test
- 72 Actors Cullin and Calhoun
- 73 Pages for think pieces
- 74 Handling the matter
- 75 Kind
- 81 Schools, to the French
- 82 "Hero" co-star Davis
- 84 NYC-to-Seattle dir.
- 85 Berry from Brazil
- 87 Bike, e.g.
- 88 Weight-loss strategy
- 89 Narrow strip of land: Abbr.
- 90 Feng —
- 91 Russian news agency
- 92 Penetrating woodwind
- 93 Sarges, say
- 98 Jewish mystical tradition
- 99 Last letters
- 100 Dwell (on)
- 102 Like insteps and rainbows
- 104 Hip place
- 106 Winter bug
- 108 Gaucho rope
- 109 "The Dance" artist
- 110 Female goat
- 111 Fetch
- 112 Sans — (font style)
- 117 Pioneer Boone, to townfolk
- 120 — de plume
- 121 Hail, to Ovid
- 122 Rap's Dr. —
- 123 A, in Italy
- 124 Opal ending
- 125 LPs' successors





## viewpoint

## Trump's budget: A 'great' hole in economic security

BY AL NORMAN

**R**ich people don't need much financially from the federal government. But at the other end of the economic ladder, government can often play a critical role in



## Push Back

protecting the well-being of citizens. For this reason, it is not surprising that most of the people who are hurt when the federal government cuts its spending are

low-income people. President Trump's 2018 budget released in late May brings bad news for millions of people living on a limited income.

According to the report, "Insecurity in the States 2016," by the Gerontology Institute at the University of Massachusetts Boston, 61 percent of residents age 65 and older living alone in Massachusetts have

...Government can often play a critical role in protecting the well-being of citizens. For this reason, it is not surprising that most of the people who are hurt when the federal government cuts its spending are low-income people.

incomes below the level needed to meet their basic living expenses without going into debt. Massachusetts ranks second in the nation for the percentage of elders living in economic insecurity - behind only Mississippi.

President Trump's budget eliminates or slashes funding for a number of key safety net programs that help elders living in economic insecurity:

- The Low-Income Home Energy Assistance Program (LIHEAP). The president eliminates funding for fuel assistance, a reduction of \$3.9 billion that helps low-income households and families, in-

cluding many older adults, with heating and energy bills throughout the year. Especially critical in New England winters.

- Medicaid and Food Stamps. The president proposes massive cuts to Medicaid, food stamps and income assistance programs for low-income Americans. The Trump budget would reduce assistance for low-income Americans by nearly \$1 trillion over 10 years, over half of which would come from Medicaid alone. The Trump plan would allow states to block grant the Medicaid program for all eligibility categories - including for older adults and people with disabilities who make up the bulk of Medicaid spending. The administration estimates these reforms would result in a \$610 billion reduction in Medicaid spending over 10 years on top of the \$840 billion cut assumed in the American Health Care Act. The food stamp program (SNAP) supports 4.8 million adults age 60 and over every year, but only reaches three out of five seniors who qualify for this support. The Trump budget proposal would cut SNAP by 25 percent, or \$193 billion over 10 years.

- State Health Insurance Assistance Program (SHIP). The president's budget zeroes-out the \$52.1 million for the SHINE (Serving the Health Insurance Needs of Everyone) program, which provided 76,000 Massachusetts seniors last year with free health insur-

ance counseling for Medicare and Medicaid needs. SHINE is a cost-effective, volunteer-driven counseling service that is the only source of counseling that is not tied to insurance providers.

- Senior Jobs: The president eliminates the Senior Community Service Employment Program (SCSEP), the only workforce development program that specifically targets older adults in or near poverty, and the Senior Corps programs (RSVP, Foster Grandparents and Senior Companion). Many of these jobs supplement workforce needs at local community-based organizations serving seniors.

It's hard to see how any of the president's cuts make America great again. They will instead create a "great" hole in the nation's safety net that helps poor seniors pay their household bills and stay above water. Congress should ignore the president's budget, and give us a plan that helps feed the poor, heats their homes, and provides them with basic health and long-term care supports.

That would be a truly "great" budget.

**Al Norman is the executive director of Mass Home Care. He can be reached at [info@masshomecare.org](mailto:info@masshomecare.org) or 978-502-3794. Archives of articles from previous issues can be read at [www.fiftyplusadvocate.com](http://www.fiftyplusadvocate.com).**

## Reverse Mortgages: Time to trust?

Reverse mortgage  
Continued from page 19

as "assured reliance on the character, ability, strength, or truth of someone or something." You've heard the words "reverse mortgage" but have you invested time to better understand the mechanics and debunk the myths?

The key is getting the facts from an independent third party and then talk with an experienced professional. An excellent start is to read the only federally approved consumer booklet published by the National Council on Aging, "Use Your Home to Stay at Home." You are welcome

to call or email me and I'll forward a free copy to you.

Also, HUD-approved non-profit reverse mortgage counselors are available to give you a non-vested education about the merits of a reverse mortgage. I'll be happy to give you a list. And lastly, with no obligation, I'll also be happy to give you various scenarios for your particular situation. That will allow you to compare different options to help you achieve your long-term goals.

Being better informed will allow you to trust deciding if a reverse mortgage is the best solution for you.

**Alain Valles, CRMP and president of Direct Finance Corp., was the first designated Certified Reverse Mortgage Professional in New England and is the leading licensed loan officer in Massachusetts. He can be reached at 781-724-6221 or by email at [av@dfcmortgage.com](mailto:av@dfcmortgage.com). Archives of articles from previous issues can be read at [www.fiftyplusadvocate.com](http://www.fiftyplusadvocate.com).**

## Answers to Super Crossword

(puzzle on page 19)

E	V	I	C	T	S		M	S	R	P		C	R	E	T	E		D	J	S		
L	E	N	O	R	E		I	S	E	E		A	U	T	O	S		C	U	T		
K	E	N	N	E	T	H	L	A	Y	D	O	R	M	A	N	T		A	D	E		
		E	S	K	I	M	O			A	F	T			G	E	O	R	G	E		
T	H	R	U		N	O	R	M	A	N	F	E	L	L	A	S		L	E	E	P	
R	E	E	L	S		D	E	B	T		L	E	I			D	A	D	S			
I	R	A		O	D	E		N	A	I	L		A	L	B	A	N		R	B	I	
M	A	R	K	F	E	L	T	U	N	C	O	M	F	O	R	T	A	B	L	E		
			L	A	N	A	I			A	I	S		O	S	G	O	O	D			
S	H	U	E		P	L	A	N	E	T	S		A	N	E		R	B	I			
P	E	T	E	R	O	S	E	T	O	T	H	E	O	C	C	A	S	I	O	N		
A	N	A		O	P	E		L	U	C	E	R	N	E		O	S	S	A			
I	N	H	E	R	E		G	A	G			I	S	W	A	R						
N	A	N	C	Y	D	R	E	W	A	D	I	S	T	I	N	C	T	I	O	N		
			O	S	S	I	E		T	I	S	H		T	W	A		N	B	C		
C	O	O	L			D	N	A		E	T	U	I			I	T	T	O			
A	M	B	E	R		H	E	A	R	D		T	H	I	N	G	S		H	E	E	S
B	E	S	S	I	E		C	O	P		S	E	E	D	E	R						
A	G	E		A	N	N	A	H	E	L	D	U	P	T	R	A	F	F	I	C		
L	A	S		T	R	O	V	E		A	R	N	O		I	N	L	A	N	D		
A	S	S		A	I	M	E	D		N	E	A	T		F	L	U	X	E	S		



# 'FLIPPING' the situation

BY MARIANNE DELOREY, Ph.D.

I hated fifth grade. Almost 40 years later I can say without exaggeration it remains one of the worst years of my life. It was the first time that I truly



## Housing Options

had a hard time getting along with others, perhaps because we were all struggling with pre-adolescence in our own way. Time has a way of giving us perspective, so I thought I was mostly recovered from that horrible year of my life...that is, until my son started fifth grade. All of a sudden, my back was up for no tangible reason. I was braced for him having to repeat my definition of hell. The whole

year, however, has been smooth as silk for him – until the other night when he got teary talking about working with others on a dreaded “group project.”

The teacher wouldn't let him work with his friends. He got assigned to work in a group but someone else was doing the fun work. That part was late and he couldn't do his part without having the other part completed.

“Mom, I could do so much better if my teacher let me pick my group,” he said.

I took a deep breath. I may not have had the answers in fifth grade, but I had been working in multifamily housing for decades. I knew what to say.

“Your teacher knows something you don't. When you are out in the world, you don't always get to pick your coworkers, your neighbors, and other people you interact with. You have to learn to get along with and sometimes work with all kinds of people.”

“Yeah, but what happens if I can't?”

“You can't control other people. The best any of us can do is control how we react.”

We talked about the buildings of elderly people where I work. We talked about how unpleasant it might be to eat dinner next to someone with a drippy nose or who used perfume that smelled like gasoline. We talked about how sometimes, the best we could do was decide not to be bothered by something and that there was always a choice. We can always choose to be happy, even when things were bad. I told him how one day, I met someone who had decided that the smell of skunks reminded him of summer, and so he decided he liked the smell. I told him another story about how nobody wanted to sit next to a resident because she did not

have good table manners. One person asked if he could sit with her because he wanted to be kind. He decided it was more difficult to see someone sit alone than to put up with her poor manners. And so, he decided that an unpleasant situation was now pleasant because it was his choice.

A day or so after this conversation, my son told me they got to name their groups. In his group, they each got to include one word. Between them, they came up with Flaming Legendary Invincible Puppies, aka FLIP. He explained how he had influenced the others to come up with this name, and even if it wasn't completely his making, he had helped. This made me smile. He had FLIPPED the situation around. He had found a way to make the group his own in some small way, and he was back on track with the group.

**Marianne Delorey, Ph.D. is the executive director of Colony Retirement Homes. She can be reached at 508-755-0444 or [mdelorey@colonyretirement.com](mailto:mdelorey@colonyretirement.com) and [www.colonyretirementhomes.com](http://www.colonyretirementhomes.com). Archives of articles from previous issues can be read at [www.fiftyplusadvocate.com](http://www.fiftyplusadvocate.com)**

## Just How Well Prepared Are You?

- ❖ Estate Planning
- ❖ Elder Law
- ❖ Long Term Care Planning
- ❖ Masshealth Applications
- ❖ Corporate & Business Planning
- ❖ Real Estate
- ❖ Powers of Attorney
- ❖ Guardian/Conservator Issues



Josephine L. Veglia, Esq.

Member: *National Academy Elder Law Attorneys*



**Durbin & Veglia**  
ATTORNEYS AT LAW


275 R Main Street | Oxford, MA 01540 | 508-987-3981 | Fax 508-987-1317  
[www.durbinandveglia.com](http://www.durbinandveglia.com)



St. Mary  
Health Care Center

Physical Therapy  
Occupational Therapy  
Speech Therapy  
Hospice Care  
Holistic Approach  
to Resident Care

A non-profit Rehabilitation and Skilled Nursing Facility specializing in long term care and short term rehab with private rooms. Our Special Care unit offers a safe, secure environment and activities tailored to the need of those with dementia and Alzheimer's.



For more information or to schedule a tour:  
**Edie Nelson** at [stmaryhc.com](mailto:stmaryhc.com), Director of Marketing and Admissions  
St. Mary Health Care Center | 39 Queen Street, Worcester, MA 01610  
508-753-4791 | [www.stmaryhc.com](http://www.stmaryhc.com)

## Now Leasing

Sitkowski School Apartments

29 Negus Street  
Webster, MA 01570

Heat & Hot Water Included in the Rent

- Hardwood Floors
- Ceiling Fans
- Laundry Room on Each Floor
- Lounge Areas
- Smoke Free Community

Sitkowski School Apartments is a 66 unit, 55+ affordable rental community that offers a safe convenient location in the historic Sitkowski School in the commercial center of Webster. The new Webster Senior Center is located in the former gymnasium which will provide an active, vibrant place for seniors to enjoy.



To request an application please call  
508.943.3406 TDD 800.439.2370  
Must Meet Income Requirements  
Rents Starting at \$650 • Section 8 Accepted



Reasonable Accommodations may be requested by calling 508-943-3406





# Drosophila and I

By JANICE LINDSAY  
CONTRIBUTING WRITER

**D**rosophila Melanogaster and her family came to visit. I was not happy about it. If she had come by herself or with just a couple of friends, I would not have felt the urge to kill.

But when I opened the two-quart covered pail that is my



## Inklings

a kitchen composter, Whoosh! Out flew about a dozen of Drosophila's kith and kin. Fruit flies. A fly of the female persuasion had apparently gained entrance and done what lady fruit flies do, which is to lay somewhere between 100 and 1,000 eggs. That was all it took to turn my composter into Drosophila Incubator and my kitchen into a fruit-fly-skydiver's delight.

I slammed the cover down to trap the remaining siblings inside. I whisked the composter outside and scrubbed it. Now I had to deal with the pesky escapees.

Normally, I'm not an insect-killer. I generally consider permanent deterrence only if the insect (a) competes with us for food; or (b) considers us food. So kitchen ants, mosquitoes, ticks – bye-bye. As for others, I respect their space if they respect my space.

Fruit flies fall into the (a) category. Also, they are extremely annoying. They were not respecting my space. They soared jauntily around my kitchen, watching me with their beady red eyes (I couldn't actually see the eyes, but I knew they were there), floating around my head when I made salad, taunting, mocking, always at the edge of my vision.

You cannot catch a fruit fly in flight. As soon as you clap your hands where they are, they aren't.

But my husband ate a banana for lunch. Banana! There's nothing

a fruit fly likes better than a nice sweet rotting banana peel. I sliced a piece, flattened it skin-side down on the white countertop, threw in a rotting blueberry for good luck, and waited. With a wadded, wet paper towel.

Sure enough, here they came. Aim. Smash! One down. You can dispatch only one at a time, for your aim must be true, and the others startle and jump away. I felt like the creature in a monster movie, picking characters off one by one. The characters look around and ask, "Where's Fred?" No Fred, so they send Steve to look for Fred. Pretty soon, "Where's Steve?"

Fortunately, fruit flies have a short memory. Soon, they returned to the banana peel, and I was waiting.

In the end, I prevailed.

When my kitchen was finally fly-free, I researched fruit flies on the Internet. It turns out that they're native everywhere in the world, so they probably hadn't specifically targeted my particular kitchen. They do not usually en-

ter the house on fruit, but invite themselves in because they smell those juicy pears ripening on the counter.

Any ripening, rotting, or fermenting vegetable or fruit is their prime real estate and a fine place to raise a family, which, from egg to adult, takes about a week. They mate in two days and die a few days later. Given the right mushy, moist environment — and no acquaintances like me — they enjoy a short, pleasant, rot-engorged life.

I learned that fruit flies can be trapped. Take a glass jar or bottle, put ripe fruit, red wine, or cider vinegar on the bottom, and make a paper funnel at the opening. In they go; out they don't come. If you use wine or vinegar in a wide bowl or glass, you might not need the funnel.

In any case, they die well-fed and happy. It's the humane way. It has to be kinder than being flattened by some maniac wielding a wet paper towel.

Contact [jlindsay@tidewater.net](mailto:jlindsay@tidewater.net)

**The Quality Difference.**

*You know it.  
You deserve it!*

**Luxury Senior Living  
Comes to Shrewsbury**



No community buy-in



Your apartment remains your home, regardless of care needs



Anytime Dining, eat what you like, when you like



**NOW  
Accepting  
Deposits**

THE  
**RESIDENCE**  
*at Orchard Grove*

For more information contact  
Elizabeth Mattei, Tel 508-841-5735  
[emattei@residenceorchardgrove.com](mailto:emattei@residenceorchardgrove.com)

Independent & Assisted Living • Reflections Memory Care

258 Walnut Street, Shrewsbury • 508-841-5735 • [www.residenceorchardgrove.com](http://www.residenceorchardgrove.com)



# Preserving Memories

*with Dignity*

CREMATION AND AFFORDABLE FUNERAL OPTIONS

*When it comes to your final arrangements...*

Shouldn't you make the decisions? The arrangements you make will reflect your exact wishes and desires.

Arrangements can be made in the comfort of your own home.

The Shaw-Majercik Funeral Home provides affordable cremation and traditional funeral services. We are the largest cremation provider in Worcester County.

Complete  
**\$1375**  
Direct Cremation

*Shaw-Majercik  
Funeral Home*  
ESTABLISHED 1910



*Over 100 Years of Continuous Service*

48 School Street, Webster, MA 01570

508-943-6278 • www.shaw-majercik.com

**1(800)279-7429**

Serving  
All  
Faiths

Veteran  
Owned &  
Operated

# A Reverse Mortgage is not for everyone.

## Use Your Home to Stay at Home®

The official reverse mortgage consumer booklet  
approved by the U.S. Department of Housing &  
Urban Development



But everyone *should know the facts* about a Reverse Mortgage and how it works. Call or email to receive a **FREE copy** of the National Council on Aging's 36-page "Use Your Home to Stay at Home" consumer booklet for those considering a reverse mortgage.

Call to get your FREE copy of  
"Use Your Home to Stay at Home"

**(781) 724-6221**

or email to: [av@dfcmortgage.com](mailto:av@dfcmortgage.com)



Massachusetts Mortgage Broker License MB1535

We arrange but do not make loans.

[www.dfcreversemortgage.com](http://www.dfcreversemortgage.com)

40 Accord Park Drive - Suite 208 - Norwell, MA 02061



FOR YOUTH DEVELOPMENT®  
FOR HEALTHY LIVING  
FOR SOCIAL RESPONSIBILITY

# BUILD MORE THAN MUSCLE.

## Join Today!

**When you join the Y, you're committing to more than simply becoming healthier. You are supporting the values and programs that strengthen your community.**

**Special Rates for Seniors 65+  
Ask about our health insurance  
reimbursements!**

**Financial Assistance Available  
[www.ymcaofcm.org](http://www.ymcaofcm.org)**



## Affordable Living at its Best

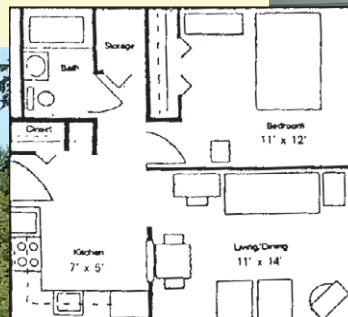
Income Guidelines: \$36,200 single / \$41,400 couple

Now accepting Applications for 62 years of age and older and those that are under 62 years of age and are permanently disabled.

- Heat and hot water included
- Qualified Applicants pay 30% of adjusted income
- 24 hour emergency maintenance
- Non-Smoking Community
- Monthly activities include: exercise classes, birthday parties, book mobile, blood pressure screens and podiatry
- Manicured walking paths with garden plots
- Ideally located in Natick residential bus route
- Pets okay under 20 lbs.



Relax in Park-like setting

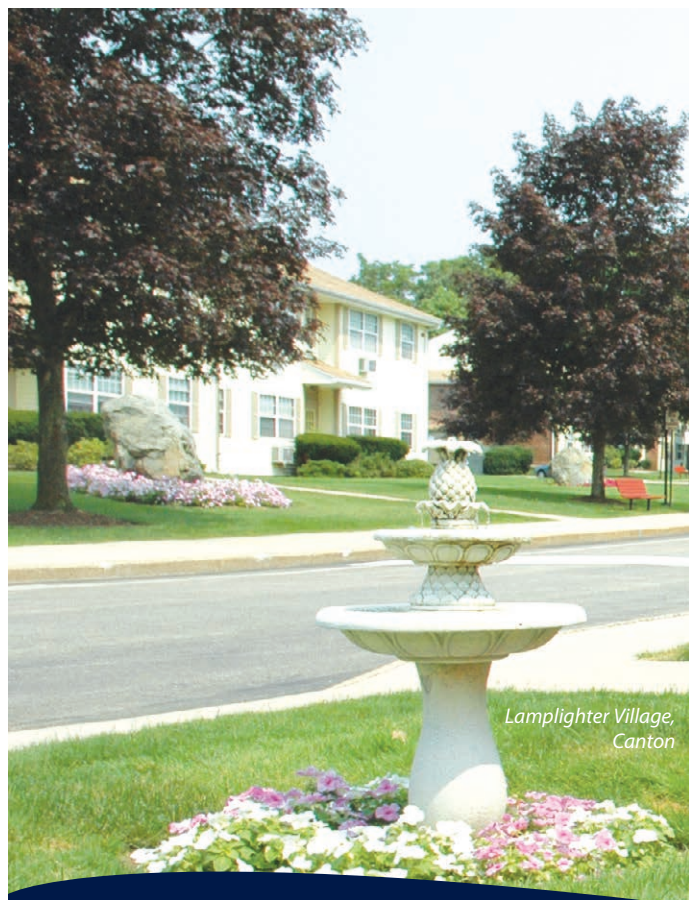


Comfortable floor plan

## Sherwood Village Apartments

143~145 Mill Street, Natick, MA 01760

Call at **508-651-1811** FOR DETAILS



Lamplighter Village, Canton



Congregational Retirement Homes, Canton

## We Put The "Home" In Housing!

....

### Bixby/Brockton Centre

103-106 Main St, Brockton - 508.588.5556

1 & 2 Bedrooms

Heat & Hot Water Included

Community Room & Library

### Congregational Retirement Homes

101 Cottage St., Melrose - 781.665.6334

Efficiencies, Studios & 1Bedrooms

Community Room, Library, Beauty Salon

Pet Friendly\*\*

### Lamplighter Village

1 Stagecoach Rd., Canton - 781.828.7834

1 & 2 Bedrooms

Community Room

Pet Friendly\*\*

### Mt. Pleasant Apartments

70 Perkins St., Somerville - 617.623.5810

1 & 2 Bedrooms

Heat & Hot Water Included

Pet friendly\*\*

**Now Accepting Applications!**



Our communities feature 24 hour emergency maintenance, professional management on-site, laundry care center, emergency call system, planned resident events & activities, and close to public transportation, shopping, restaurants, and medical.

**781-794-1000 | PeabodyProperties.com**



\*Income limits apply. Communities for 62 years+, HP/disabled person 18 years+. Please inquire in advance for reasonable accommodations. Info contained herein subject to change without notice. \*\*Breed & weight restrictions apply.